

KARIBAN

REFERENCE : K6111

SIZES : XS_S_M_L_XL_XXL

COMPOSITION :

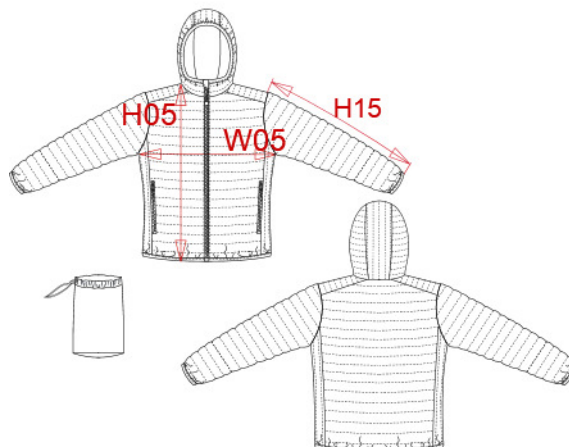
Main fabric : Polyamide 380T PA coating- 35 For Garment and packable bag 100%polyamide

Fabric : Polyester 380T PA coating - 45 For Garment and packable bag 100%polyester

Main fabric : Polyamide 380T PA coating- 35 For inside garment and pockets 100%polyamide

Wad 1 : Padding Polyester fake down (micro broken) - 260/270

Inside body,sleeve and hood 100%polyester



WEIGHT :

Main fabric : 35 gsm

Fabric : 45 gsm

Main fabric : 35 gsm

Wad 1 : 260/270 gsm

TECHNICAL DETAIL :

Coating for fake down proof

ARTICLE WEIGHT :

465 gr/pc

DESCRIPTION								COLORS		PANTONE SERIGRAPHIE	
Français : Doudoune légère capuche femme English : Ladies' lightweight hooded down jacket Nederlands : Lichte damesjas met capuchon Deutsch : Leichte Damen-Steppjacke mit Kapuze Español : Chaqueta acolchada ligera con capucha para mujer Italiano : Piumino donna leggero con cappuccio Português : Blusão de senhora acolchoado leve com capuz								Black	Black		
								Navy	433C		
								Light royal blue	653C		
								Red	200C		
								Marl dark grey	Based on 446C		
								Marl silver	Based on 877C		
								White	White		
								Wine	504C		
MEASUREMENT											
Description	XS	S	M	L	XL	XXL					
H05 (L) Hauteur totale / Total height	60	62	64	66	68	70					
W05 1/2 largeur poitrine terminée/ 1/2 chest width after sewing	46	49	52	55	58	61					
H15 Longueur manche / Sleeve length	64	65	66	67	68	69					
CARE LABEL											
PACKING											
Box	15 pcs / box XS => L: 60cm W: 40cm H: 35cm GW: 6.2kg NW: 5.2kg S => L: 60cm W: 40cm H: 35cm GW: 6.4kg NW: 5.4 kg M => L: 60cm W: 40cm H: 35cm GW: 6.8kg NW: 5.8 kg L => L: 60cm W: 40cm H: 35cm GW: 6.9kg NW: 5.9kg XL => L: 60cm W: 40cm H: 40cm GW: 7.1kg NW: 6.1 kg XXL => L: 60cm W: 40cm H: 40cm GW: 7.3kg NW: 6.3kg										