

# KARIBAN

**REFERENCE :** K609

**SIZES :** S\_M\_L\_XL\_XXL\_3XL\_4XL

**COMPOSITION :**

Main fabric : Polyamide 189T taslon ottoman PU coating - 135 100%polyamide

Mesh : Mesh 115 For body lining 100% Polyester

Lining 2 : Lining 210T For sleeve lining and inner pocket sack 100% polyester

**WEIGHT :**

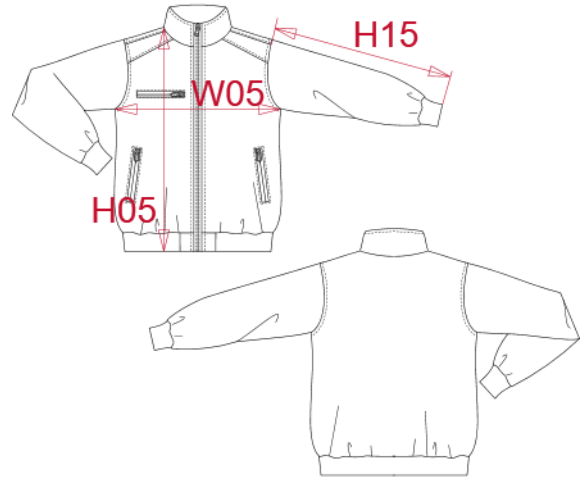
Main fabric : 135 gsm

Mesh : 115 gsm

Lining 2 : 60 gsm

**ARTICLE WEIGHT :**

620 gr/pc



DESCRIPTION
<b>Français :</b> Blouson city
<b>English :</b> City blouson jacket
<b>Nederlands :</b> Heren jas
<b>Deutsch :</b> City jacket
<b>Español :</b> Bluson city
<b>Italiano :</b> Giubbotto bomber
<b>Português :</b> Blusão city

COLORS	PANTONE SERIGRAPHIE
Black / White / Blue	Black / White / 7461C
Navy / White / Storm grey	433C / White / 425C
Red / White / Navy	200C / White / 433C

MEASUREMENT							
Description	S	M	L	XL	XXL	3XL	4XL
<b>H05</b> Hauteur totale avec BC / Total height with rib	73,50	75,50	77,50	79,50	81,50	83,50	86,25
<b>W05</b> 1/2 largeur poitrine / 1/2 chest width	57	60	63	66	69	72	76
<b>H15</b> Longueur manche avec BC / Sleeve length with rib	69	71	73	75	77	79	81

CARE LABEL

PACKING	
Box	10 pcs / box S => L:60cm W:40cm H:16cm GW:6.7kg NW:5.7kg M => L:60cm W:40cm H:16cm GW:7kg NW:6kg L => L:60cm W:40cm H:16cm GW:7.5kg NW:6.5kg XL => L:60cm W:40cm H:16cm GW:8kg NW:7kg XXL => L:60cm W:40cm H:16cm GW:9.5kg NW:8.5kg 3XL => L:60cm W:40cm H:16cm GW:9.5kg NW:8.5kg