

PR165 'Essential' Bib Apron

Description

A full bib apron that is great for more casual use in outdoor catering environments and events. A simple but effective apron that offers a smart solution for those who need coverage whilst dealing with food preparation or service.

Product Features:

- Classic bib apron
- Self fabric neckband
- Self-fabric ties

Available In:

One Size

Certifications:



Colours:

| Colour | Pantone | C | M | Y | K |
|------------|---------|-----|-----|----|-----|
| Black* | Black c | 0 | 0 | 0 | 100 |
| Dark Grey* | 425c | 52 | 29 | 30 | 78 |
| Navy* | 533c | 95 | 72 | 15 | 67 |
| Red | 201c | 7 | 100 | 68 | 32 |
| Royal | 7687c | 100 | 78 | 0 | 18 |
| White | White | 0 | 0 | 0 | 0 |

Fabric:

Black: 80% Polyester, 20% Cotton Twill, 170gsm.
 Colours: 65% Polyester, 35% Cotton Twill, 170gsm.

Suggested Decoration:

Screen Print, Transfer Print, Embroidery

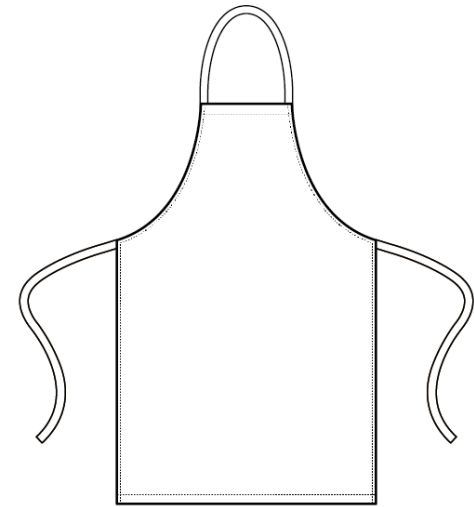
Country of Origin:

China, Bangladesh, Egypt

Commodity Code:

6211431000

Features:



Wash Care:



Carton Information:

| Sizes | Carton | Pack | SKU's | Carton Weight | Carton Dimensions |
|----------|--------|------|-------|---------------|--------------------|
| One Size | 100 | 10 | 6 | 10.8kg | 60cm x 40cm x 22cm |

Garment Sizes:

78cm long, 67cm wide.