

KARIBAN

REFERENCE : K6126

SIZES : S_M_L_XL_XXL_3XL_4XL

COMPOSITION :

Main fabric : Polyester pongee 240T - 80 100%polyester

Padding : Polyester polyfil - 150 For padding 100%polyester

Padding : Polyester polyfil - 100 For Front placket and flap pocket padding 100%polyester

Fabric 1 : Cotton corduroy - 285 For inner collar, front shoulder yoke, under flap pocket and bottom binding finishing 100% cotton

Lining 2 : Polyester taffeta 210T - 60 For lining, pocket sack and inner seam binding 100%polyester

WEIGHT :

Main fabric : 80 gsm

Padding : 150 gsm

Padding : 100 gsm

Fabric 1 : 285 gsm

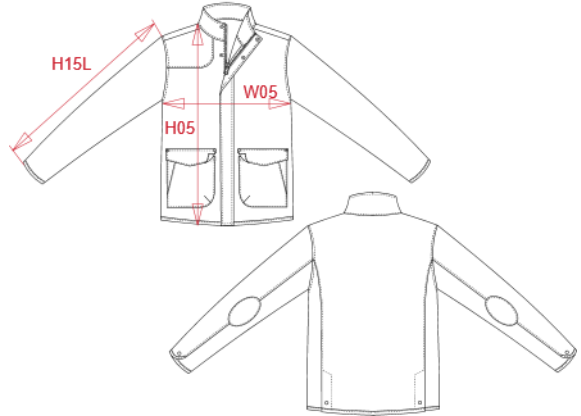
Lining 2 : 60 gsm

TECHNICAL DETAIL :

WR: 600mm

ARTICLE WEIGHT :

745 gr/pc



DESCRIPTION
Français : Veste matelassée homme
English : Men's quilted jacket
Nederlands : Gewatteerde herenjas
Deutsch : Herren-Steppjacke
Español : Chaqueta acolchada rombos de hombre
Italiano : Giacca imbottita uomo
Português : Casaco acolchoado de homem

COLORS	PANTONE SERIGRAPHIE
Black / Black	Black / Black
Navy / Black	433C / Black
Mossy green / Black	7771C / Black

MEASUREMENT							
Description	S	M	L	XL	XXL	3XL	4XL
H05 (M) Hauteur totale / Total height	73	75	77	79	81	83	85
W05 (M) 1/2 largeur poitrine / 1/2 chest width	52	55	58	61	64	67	70
H15L (M) Longueur manche longue / Long sleeve length	65,50	66,75	68	69,25	70,50	71,75	73

CARE LABEL

PACKING	
Box	10 pcs / box S => L:60cm W:40cm H:30cm GW:7.8kg NW:6.4kg M => L:60cm W:40cm H:30cm GW:8kg NW:6.6kg L => L:60cm W:40cm H:35cm GW:8.3kg NW:6.9kg XL => L:60cm W:40cm H:35cm GW:8.5kg NW:7.1kg XXL => L:60cm W:40cm H:35cm GW:8.8kg NW:7.4kg 3XL => L:60cm W:40cm H:35cm GW:9kg NW:7.6kg 4XL => L:60cm W:40cm H:35cm GW:9.2kg NW:7.8kg