

KARIBAN

REFERENCE : K590

SIZES : S_M_L_XL_XXL_3XL_4XL

COMPOSITION :

Main fabric : Cotton poplin - 120 100%cotton

WEIGHT :

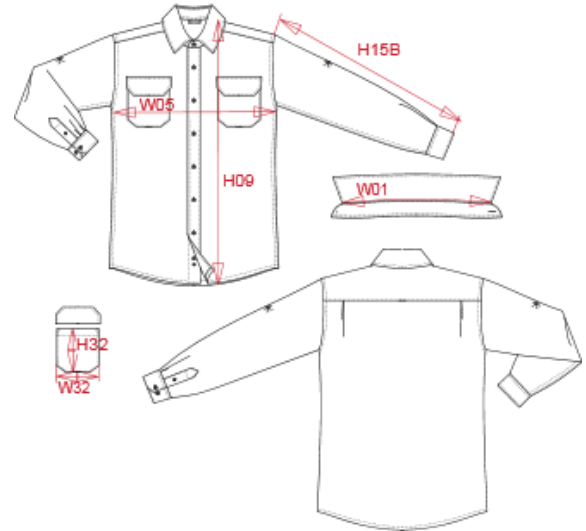
Main fabric : 120 gsm

TECHNICAL DETAIL :

Soft ironing

ARTICLE WEIGHT :

280 gr/pc



| DESCRIPTION |
|--|
| Français : Chemise safari manches longues |
| English : Long sleeve safari shirt |
| Nederlands : Overhemd safari lange mouwen |
| Deutsch : Langarm-Safarihemd |
| Español : Camisa Safari hombre manga larga |
| Italiano : Camicia safari maniche lunghe |
| Português : Camisa Safari de manga comprida |

| COLORS | PANTONE SERIGRAFIE |
|-------------|-----------------------|
| Beige | 7536C |
| Navy | 433C |
| White | White |
| Light khaki | 7764C |

| MEASUREMENT | | | | | | | |
|--|-------|-------|-------|-------|-------|-------|-------|
| Description | S | M | L | XL | XXL | 3XL | 4XL |
| W05 (M) 1/2 largeur poitrine à 1.5cm de l'emmanchure / 1/2 chest width at 1.5cm below armhole | 51 | 54 | 57 | 60 | 63 | 66 | 69 |
| H09 (L) Hauteur totale devant / Front total height | 73,50 | 75,50 | 77,50 | 79,50 | 81,50 | 83,50 | 85,50 |
| H15B (L) Longueur manche avec poignet / Sleeve length with cuff | 64 | 65 | 66 | 67 | 68 | 69 | 70 |
| W01 (M) Longueur encolure / Neckline length | 40,50 | 41,75 | 43 | 44,25 | 45,50 | 46,75 | 48 |
| H32 (L) Hauteur poche devant / Front pocket height | 12,50 | 12,50 | 13,50 | 13,50 | 14,50 | 14,50 | 14,50 |
| W32 (L) Largeur poche devant / Front pocket width | 11,50 | 11,50 | 12,50 | 12,50 | 13,50 | 13,50 | 13,50 |

| CARE LABEL |
|------------|
| |

| PACKING | |
|---------|--|
| Box | 25 pcs / box S => L:60cm W:40cm H:17cm GW:7.00kg NW:5.75kg M => L:60cm W:40cm H:17cm GW:7.50kg NW:6.25kg L => L:60cm W:40cm H:17cm GW:8.05kg NW:6.80kg XL => L:60cm W:40cm H:17cm GW:8.25kg NW:7.00kg XXL => L:60cm W:40cm H:17cm GW:8.45kg NW:7.20kg 3XL => L:60cm W:40cm H:17cm GW:8.75kg NW:7.50kg 4XL => L:60cm W:40cm H:17cm GW:9.05kg NW:7.80kg |