

# KARIBAN

**REFERENCE :** K254

**SIZES :** S\_M\_L\_XL\_XXL\_3XL\_4XL

**COMPOSITION :**

Main fabric : Ring spun Combed Cotton pique preshrunk - 180 100%cotton

Main fabric : Ring spun Combed Cotton/Viscose pique preshrunk 90/10 - 180 For oxford grey color 90%cotton / 10% viscose

Main fabric : Ring spun Carded Cotton/Viscose pique preshrunk 98/2 - 180 For Ash heather color 98%cotton / 2% viscose

**WEIGHT :**

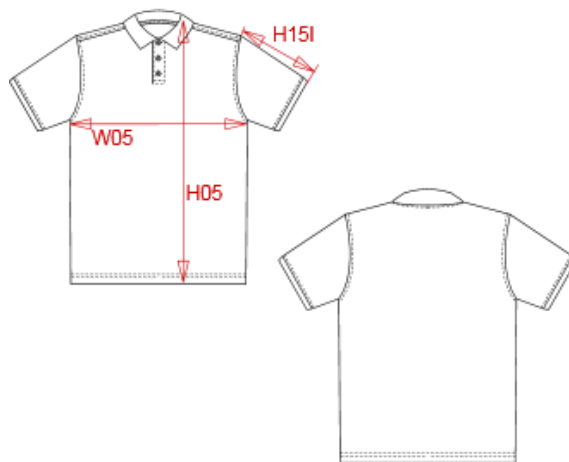
Main fabric : 180 gsm

Main fabric : 180 gsm

Main fabric : 180 gsm

**ARTICLE WEIGHT :**

215 gr/pc



DESCRIPTION							
<b>Français :</b> Polo piqué manches courtes homme							
<b>English :</b> Men's piqué short sleeve polo shirt							
<b>Nederlands :</b> Piqué-herenpolo korte mouwen							
<b>Deutsch :</b> Herren Kurzarm-Polohemd. Baumwollpiqué.							
<b>Español :</b> Polo piqué de manga corta para hombre							
<b>Italiano :</b> Polo piqué uomo maniche corte							
<b>Português :</b> Polo piqué de homem de manga curta							

MEASUREMENT							
Description	S	M	L	XL	XXL	3XL	4XL
<b>H05 (M)</b> Hauteur totale / Total height	70	72	74	76	78	80	82
<b>W05 (M)</b> 1/2 largeur poitrine / 1/2 chest width	50	53	56	59	62	65	68
<b>H15I (M)</b> Longueur manche avec bord côte / Sleeve length with rib	22,75	23,50	24,25	25	25,75	26,50	27,25

CARE LABEL				

PACKING	
Box	50 pcs / box S-M => L:60cm W:40cm H:26cm GW:11.90kg NW:10.00kg L-XL => L:60cm W:40cm H:28cm GW:13.20kg NW:11.30kg XXL-3XL => L:60cm W:40cm H:30cm GW:14.30kg NW:12.40kg 4XL => L:60cm W:40cm H:30cm GW:14.30kg NW:12.40kg

COLORS	PANTONE SERIGRAPHIE
White	White
Black	Black
Navy	433C
Red	200C
Dark grey	447C
Oxford grey	Based on Cool gray 7C
Light royal blue	653C
Orange	1585C
Yellow	1235C
Forest green	5605C
Tropical blue	7468C
Wine	504C
Fuchsia	7425C
Kelly green	7727C
Sky blue	278C
Ash heather	Based on Warm gray 1C
Chocolate	439C
Purple	7447C
Dark khaki	418C
Lime	367C
Light sand	480C
Pale pink	692C
Snow grey	421C
Deep blue	7545C
True Coral	170C